

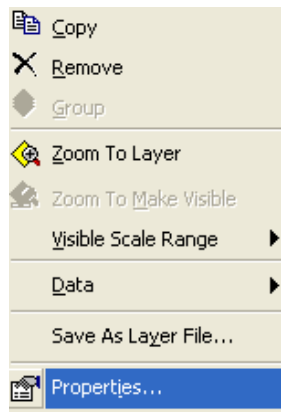
Re-establishing a Layer Data Source Connection

This process is used when a layer within your project loses connection to the LIB Server.

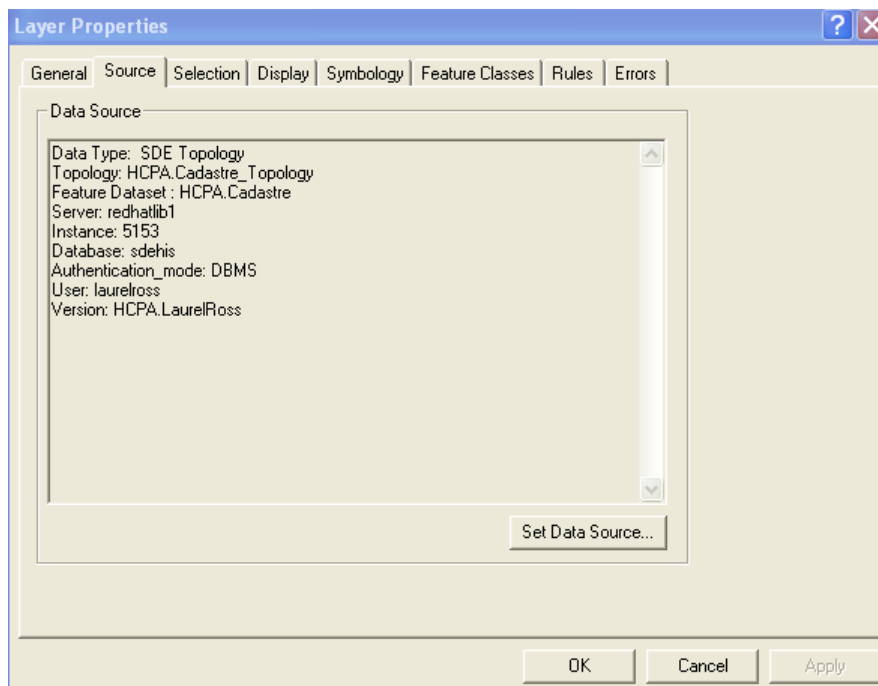
Step 1: After opening your ArcMap Project, you may notice an exclamation mark next to one or more of your layers. This means you have to reset the layer data source.



Step 2: Right-click on the layer name then click on Properties.

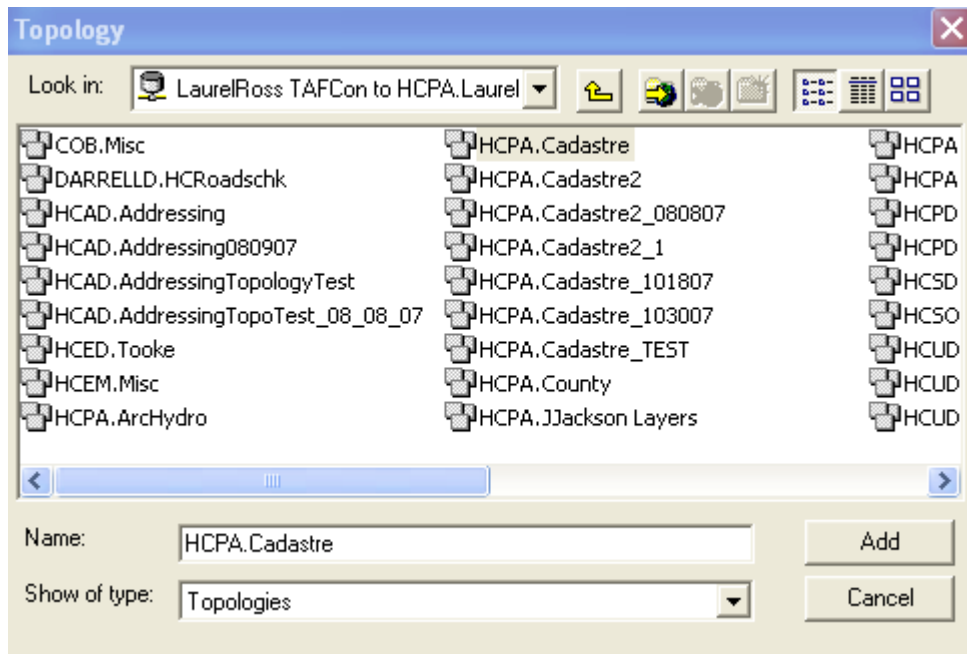


Step 3: Next, under the **Source** tab click on **Set Data Source...**

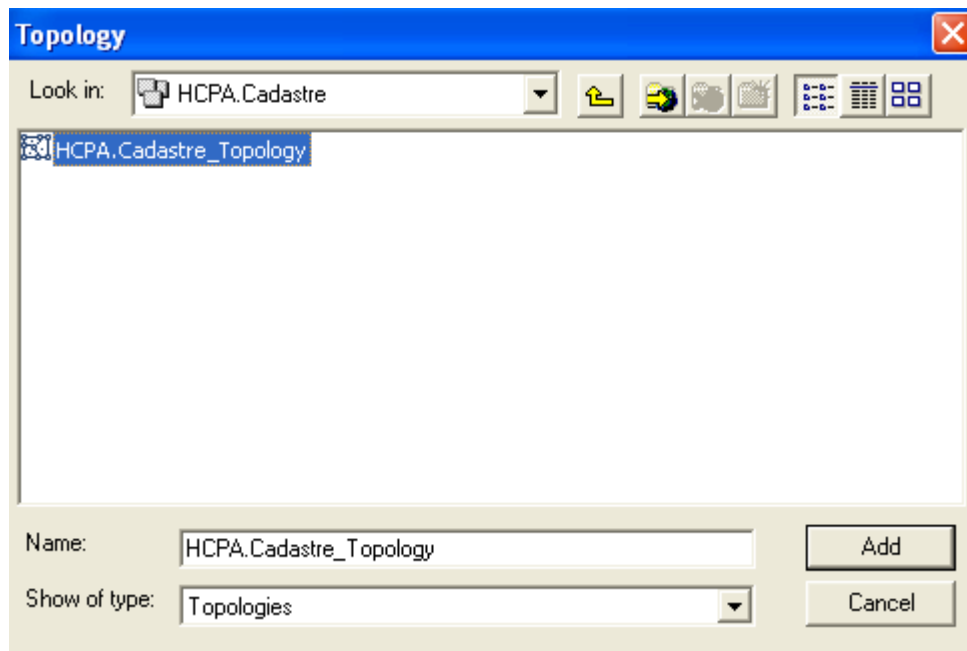


Re-establishing a Layer Data Source Connection

Step 4: You will have to navigate to the correct source in your database connection.



Step 5: Next, click on **Add** then click on the name in the box and click **Add** again.



Step 6: Then click **OK**. The dialog box should disappear and so should the exclamation mark in your Table of Contents next to the layer.

This completes the process.

Manual: GIS SOP	Revised: November 8, 2010	Page 2
Authorized by: <i>Laurel Ross</i>	Title: GIS Data Librarian	