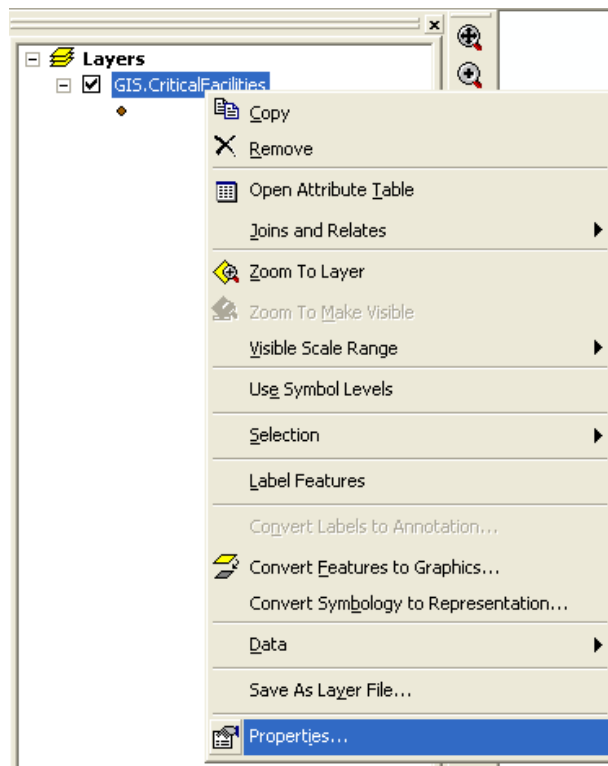
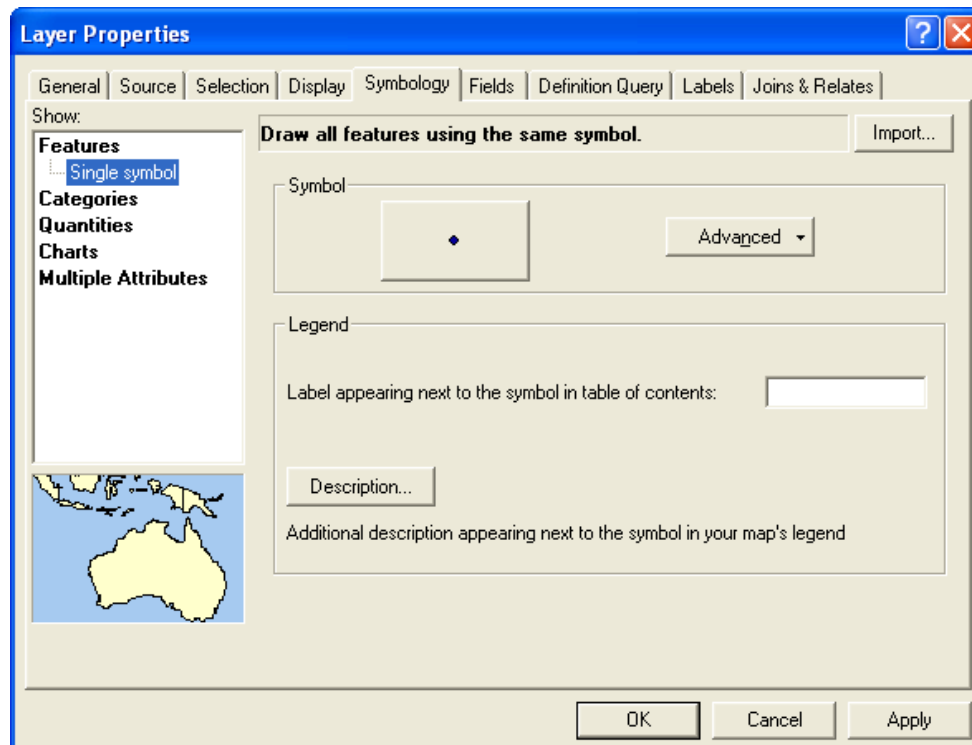


Displaying Single Feature in Layer Containing Multiple Features.

Step 1: First right click on a layer to access the **Layer Properties**.

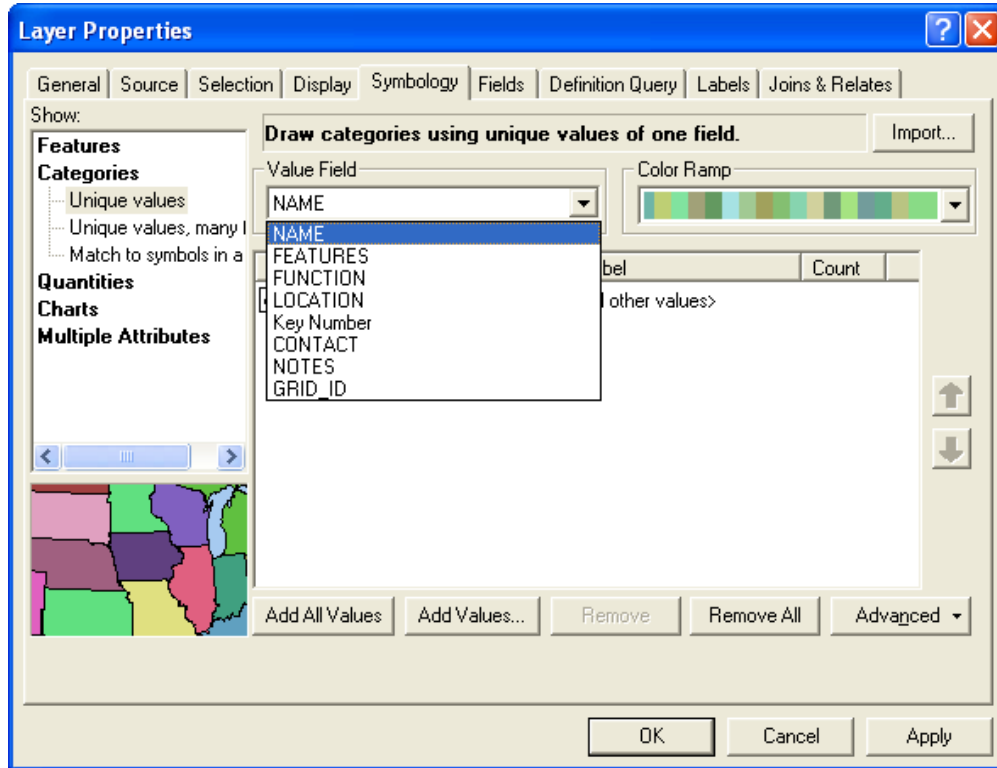


Step 2: Then choose the **Symbology** tab. This will by default display a single symbol for the layer.

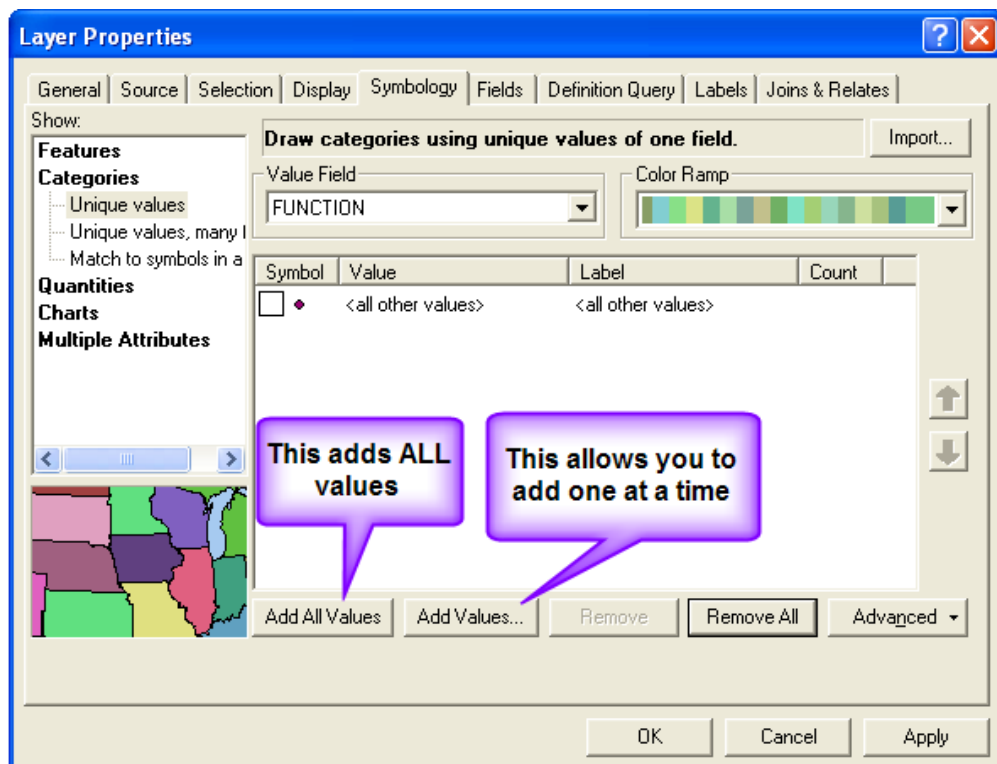


Displaying Single Feature in Layer Containing Multiple Features.

Step 3: You will want to select **Categories** and **Unique Values**; this will give you the option to display every feature in the layer differently. Choose the field in which you would like the data sorted under the Value Field drop down.

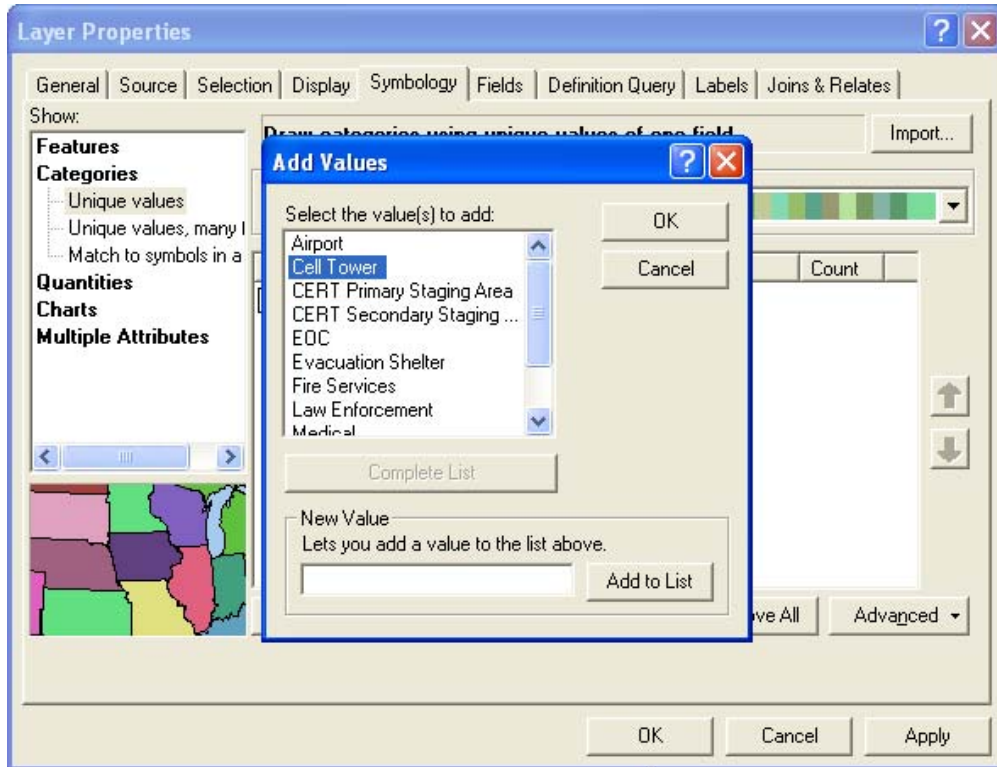


Step 4: Choose which feature or value you want to display.

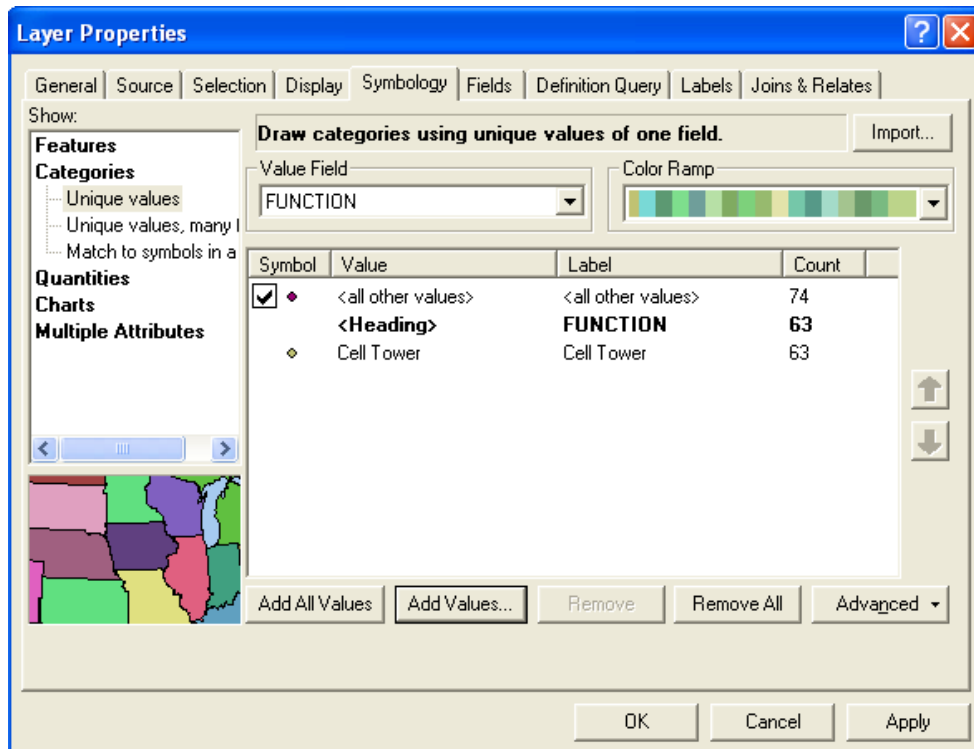


Displaying Single Feature in Layer Containing Multiple Features.

Step 5: Choose the **Add Values** button to add only the features you want to see. Then click **OK**.

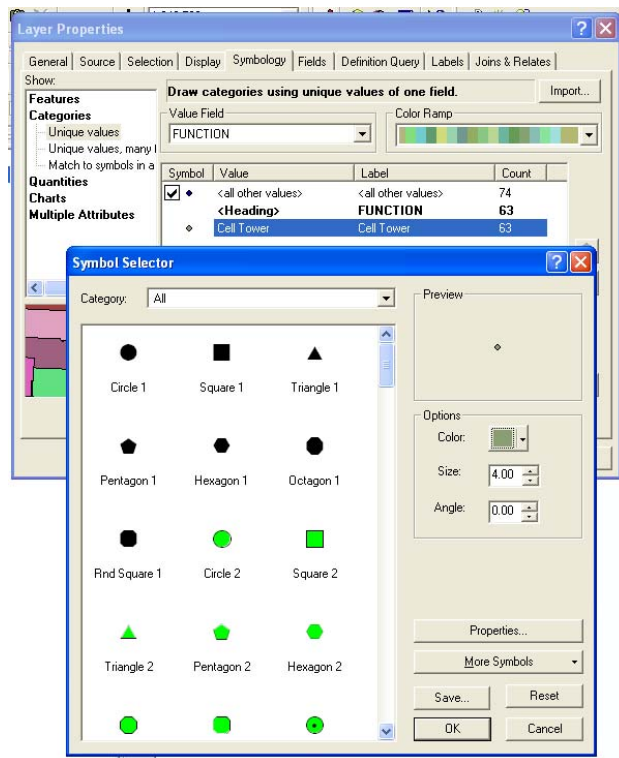


Step 6: Once you have chosen the feature you want displayed you can set the identifying symbol for that feature.

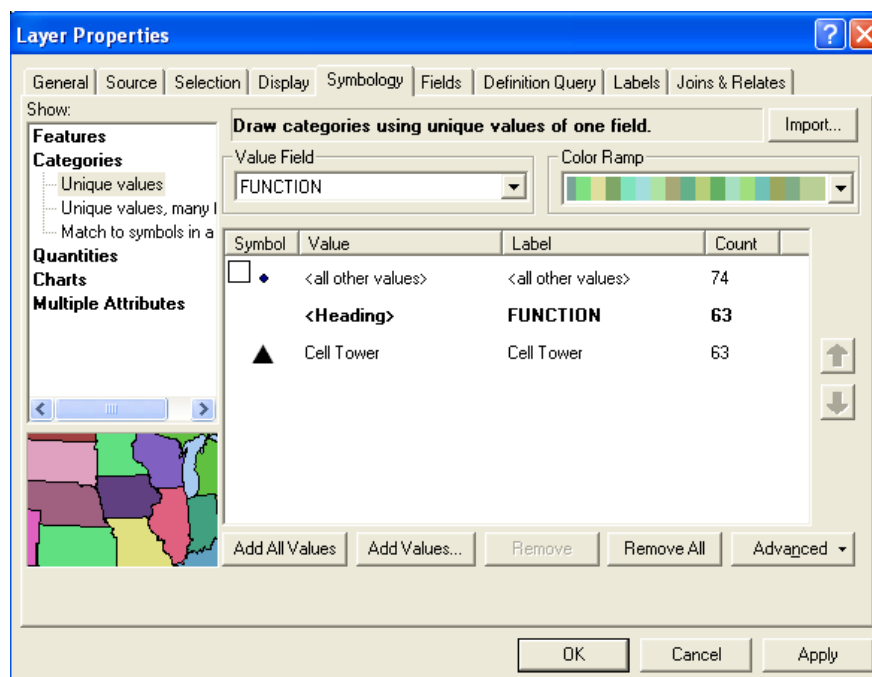


Displaying Single Feature in Layer Containing Multiple Features.

Step 7: While you are still in **Symbology** double click on Layer. This will bring up your **Symbol Selector**. Chose symbol and change color if needed. Then click **OK**.

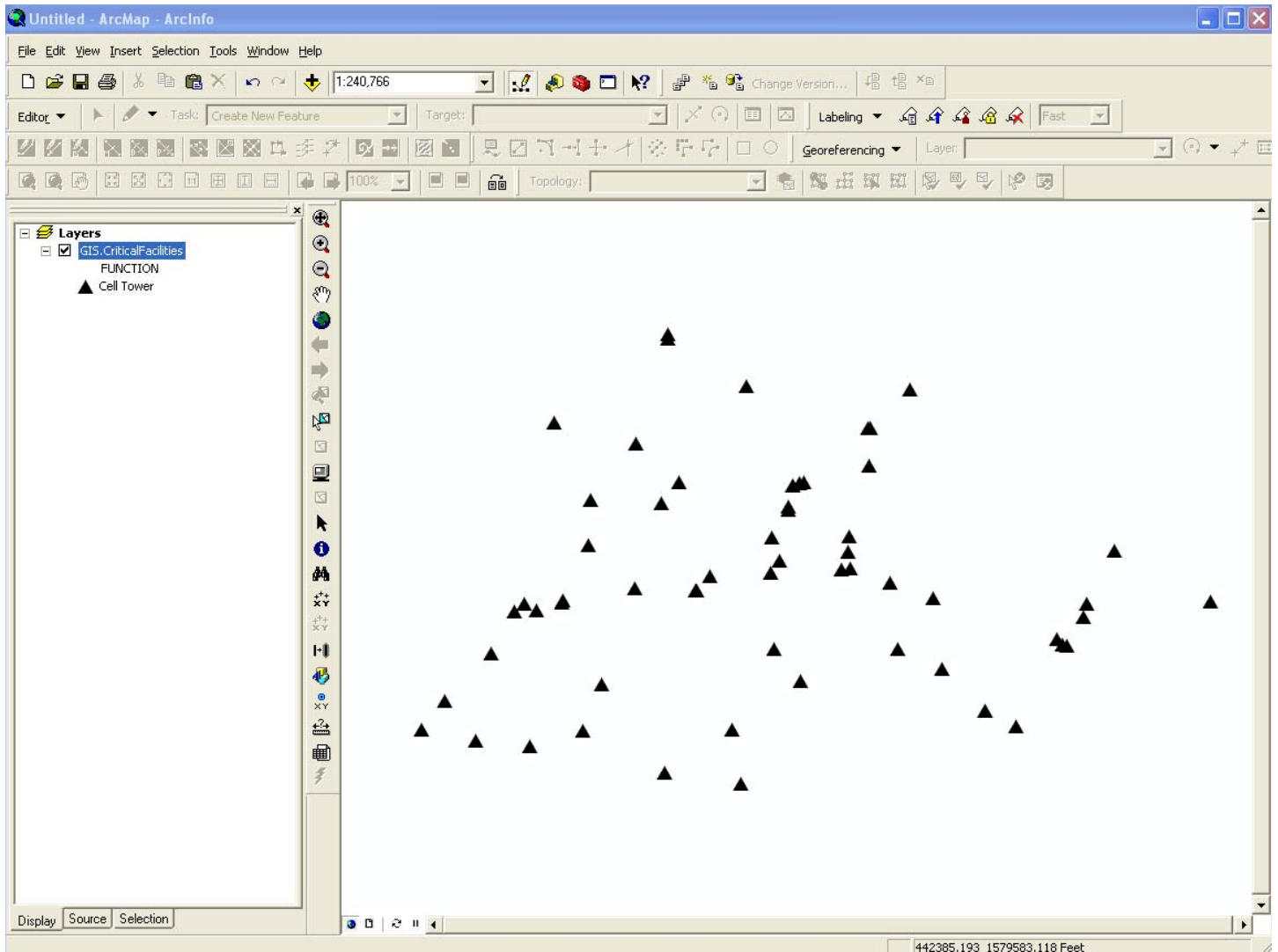


Step 8: Uncheck the <all other values> box by clicking on it. This shows any feature you have not given a specific symbol for. Then click **OK**.

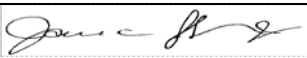


Displaying Single Feature in Layer Containing Multiple Features.

Step 9: The points on your screen should resemble the following.



This Completes this Process

Manual: GIS SOP	Revised: June 17, 2008	Page 5
Authorized by: 	Title: GIS Specialist	